

Name

Date

## WORKPLACE CONNECTION

T1 WORKPLACE | SE2.1.6.1 |  
BEHAVIOR



[GOOGLE TEMPLATE](#)

**Directions:** This unit you will learn about successful and problematic workplace behaviors. Check off the behaviors below that you think you displayed

### Successful Behaviors

- Participating/Contributing
- On-Task/Following Directions
- Collaborating
- Encouraging
- Helping
- Greeting Others
- Problem Solving
- Sharing

### Problematic Behaviors

- Interrupting
- Off-Task/Not Following Directions
- Arguing
- Disrespect/Teasing
- Complaining/Whining
- Off-Topic
- Aggression
- Not Using Materials and Possession Appropriately

What behaviors do you think you can increase? What behaviors can you decrease?

---

---

---

---

---

---

---

---

## WORKPLACE CONNECTION

T2 WORKPLACE  
BEHAVIOR

| SE2.1.6.2 |



[GOOGLE TEMPLATE](#)

**Directions:** Check off the successful behaviors you can increase.  
Check off the problematic behaviors you can decrease.

### Successful Behaviors

### Problematic Behaviors



Participating  
And Contributing



Interrupting



On-Task/  
Following Directions



Off-Task/  
Not Following Directions



Collaborating



Arguing



Encouraging



Disrespect/Teasing



Helping



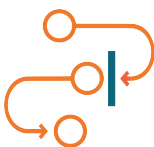
Complaining/Whining



Greeting Others



Off-Topic



Problem Solving



Aggression



Sharing



Not Using Materials and  
Possession Appropriately

Name

Date

## WORKPLACE CONNECTION

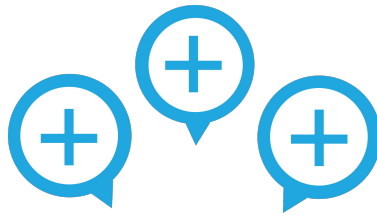
T3 WORKPLACE | SE2.1.6.3 |  
BEHAVIOR



[GOOGLE TEMPLATE](#)

**Directions:** Point to or circle your answers below.

Are there successful behaviors you can learn?



 YES	 NO
---------	--------

Are there problematic behaviors you can use less?



 YES	 NO
---------	--------

Does your behavior affect others in the workplace?



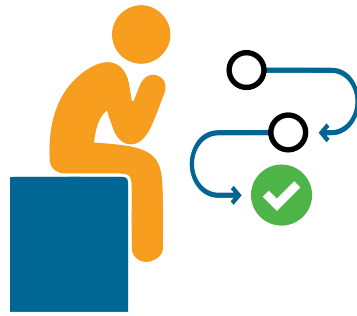
 YES	 NO
---------	--------

## Successful Workplace Behaviors

### SE2.BEHAVIORS



**Participation/  
Contributions**



**On-Task/  
Following Directions**



**Collaborating**



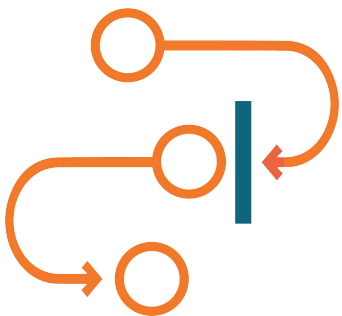
**Encouraging**



**Helping**



**Greeting Others**



**Problem Solving**



**Sharing**

# Problematic Workplace Behaviors

## SE2.BEHAVIORS



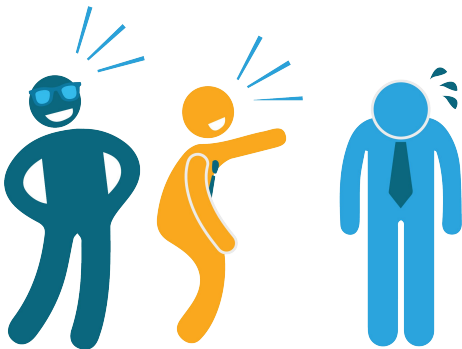
**Interrupting**



**Off-Task/ Not Following Directions**



**Arguing**



**Disrespect/Teasing**



**Complaining/Whining**



**Off-Topic**



**Aggression**



**UMAPA**